

Welcome / Bem-vindo



**GCF RSP eSIM
Certification Program**

**Asif Hamidullah
GCF Program Lead**

March 26th 2019



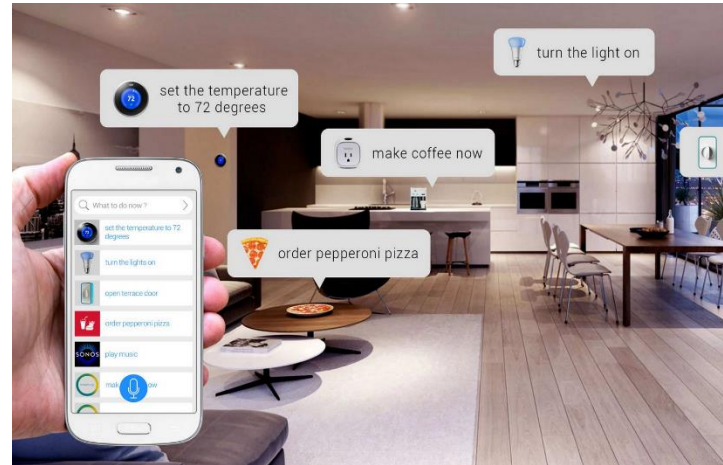
Telefonica

Mobile device interaction & dependencies are evolving...



Smartphones are evolving in their use to cater more and more to services touching users' connected and digital lives.

Wearables are becoming increasingly the next frontier for personal wireless connectivity.



The Internet of Things is extending beyond a consumer's immediate personal space, to encapsulate their home and places of work.

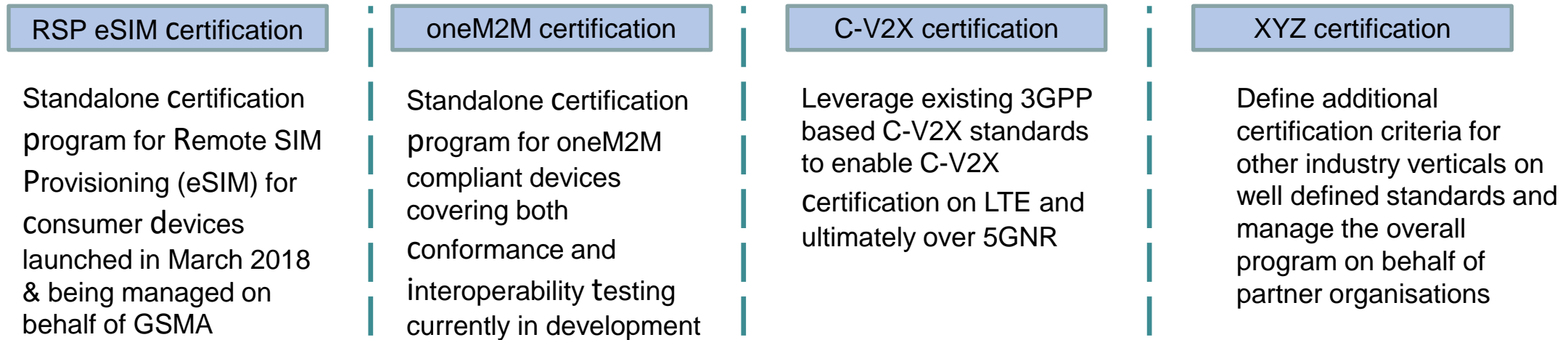
Both cloud and localised peer to peer services are becoming the norm in connected living.



Supporting this vast array of interconnected devices and services requires seamless interoperability of the underlying technologies that are enabling this digital revolution.

Plans to support these technologies, and develop innovative ways of certification are underway at GCF

Enabling certification for verticals



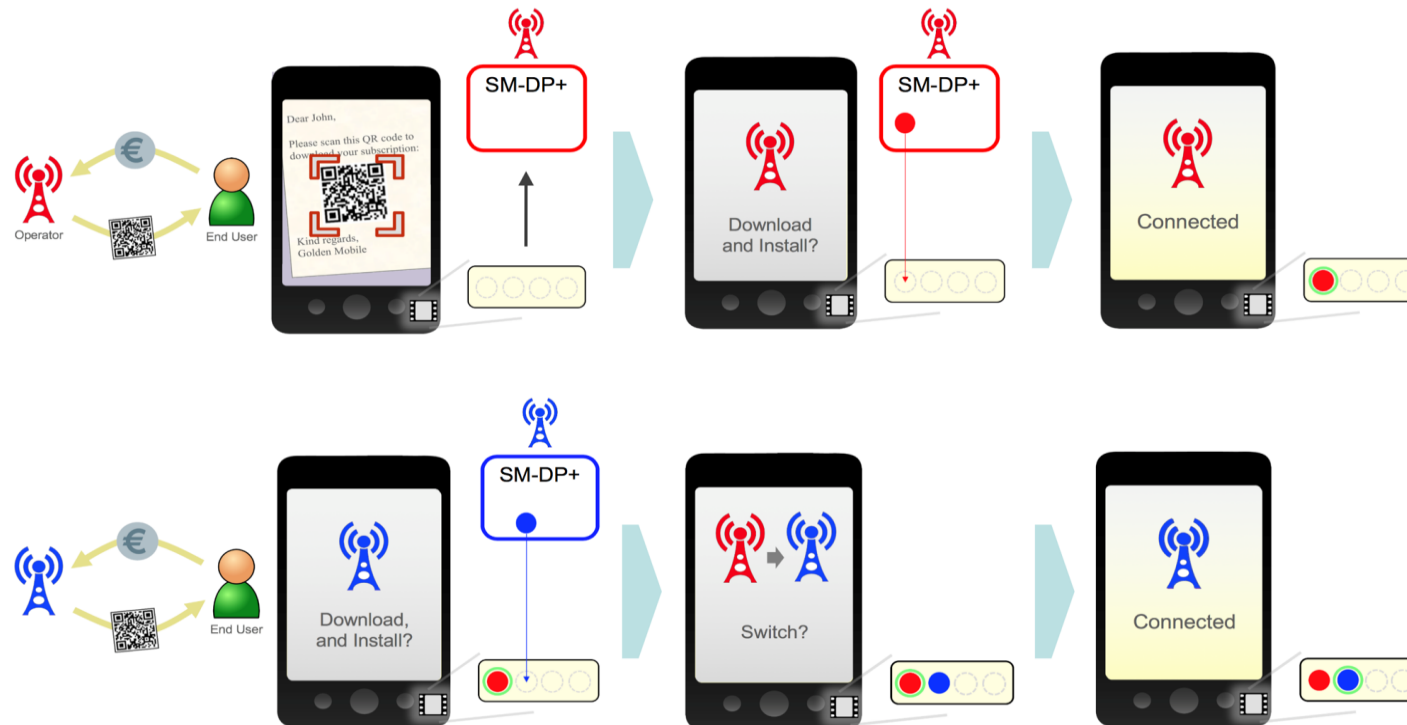
GCF IT abstraction layer

GCF certification engine



What is Remote SIM Provisioning for eSIM?

Remote SIM Provisioning is a technology being driven by the GSMA, that enables management of the eUICC which can be deployed in any device, and any segment, to allow access to a subscription to a mobile network service.



Supporting Companies



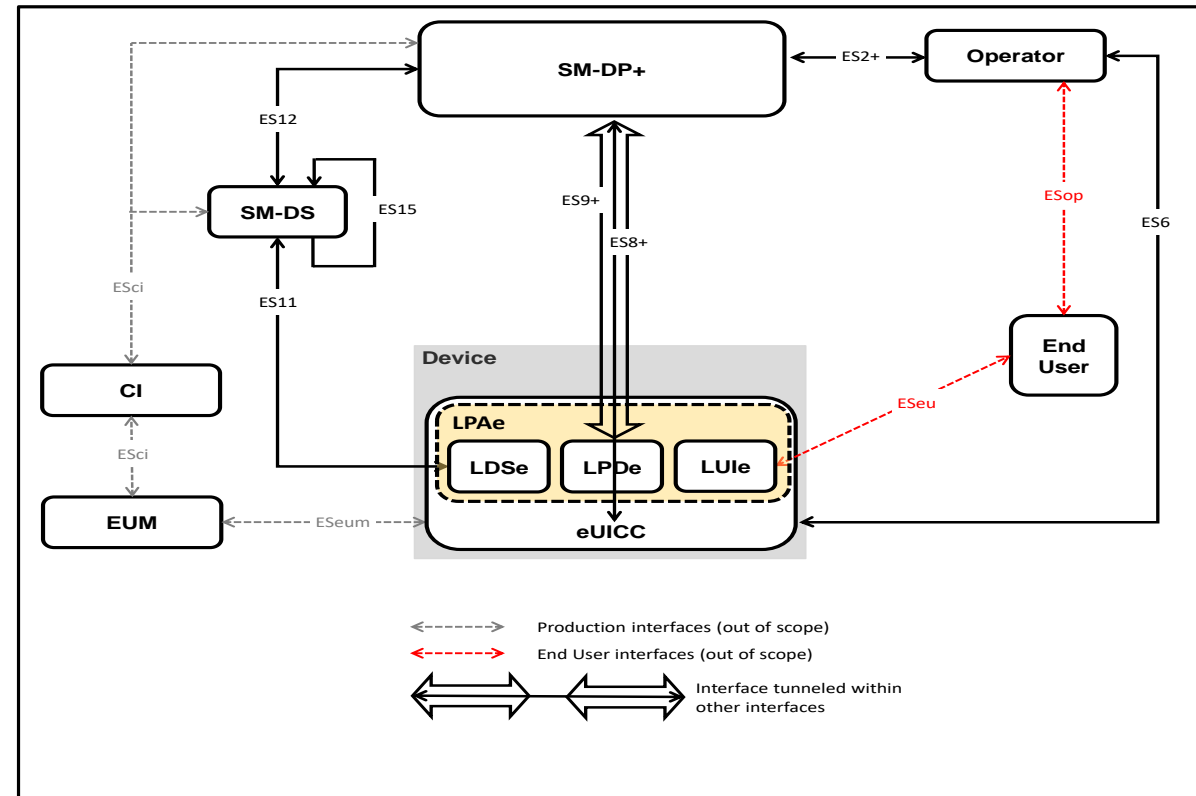
MNOs - MVNOs - SIM & Chipset - Consumer & IoT Devices - Network Infrastructure - Security - Test Industry - Security

RSP eSIM Architecture

- RSP (Remote SIM Provisioning) - the ability to remotely change the operator's profile without having to physically change the SIM itself.
- The RSP technology can be implemented on removable and soldered SIM form factors.
- The second release of the RSP specifications supports a wide range of consumer devices.
- The user can download multiple operator profiles and switch between the active operator.
- The term “eUICC” is used to represent a SIM (removable or soldered) that can be remotely provisioned.

Definitions:

- eUICC: Represents a SIM (removable or soldered) that can be remotely provisioned.
- SM-DP+: Subscription Manager Data Preparation+.
- LPA – Local profile Assistant.
- CI: Certificate Issuer.
- EUM: eUICC Manufacturer.

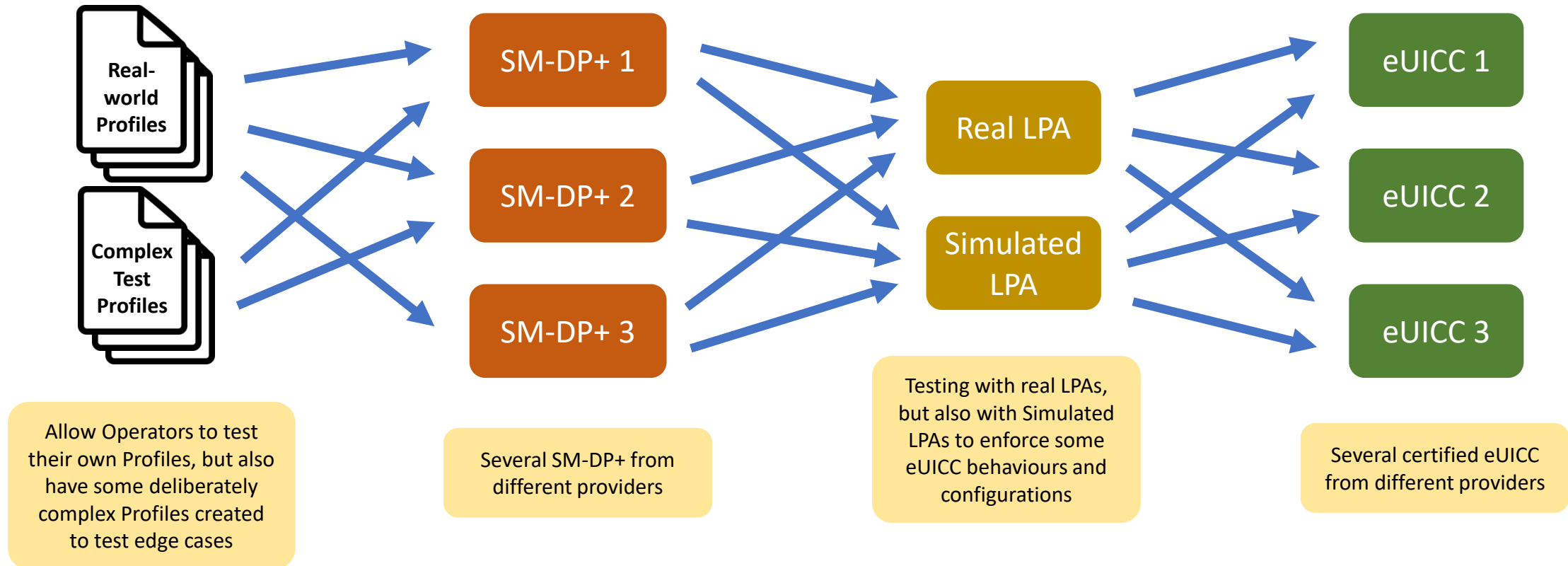


RSP eSIM Certification Criteria

- GSMA developed global specifications for Remote SIM Provisioning (RSP) for consumer devices
 - GSMA PRD SGP.21 RSP Architecture Specification v2.1
 - GSMA PRD SGP.22 RSP Technical Specification v2.1
- To ensure interoperability, GSMA is working on functional test specification:
 - GSMA PRD SGP.23 RSP Test specification (publication planned May/June 2017)
- **GCF has worked closely with GSMA to include RSP device certification as part of a standalone certification program.**

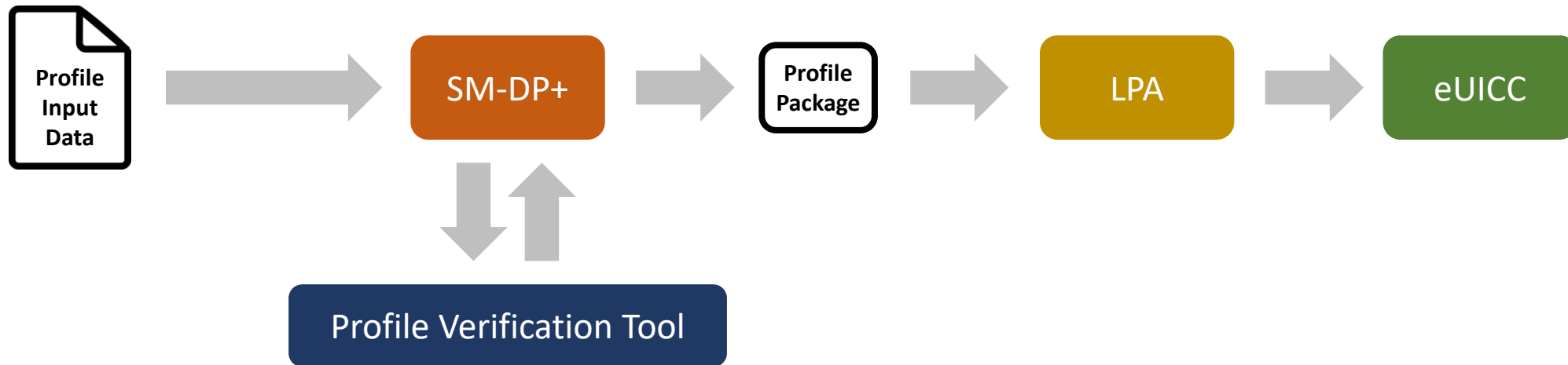
eSIM Remote SIM Profile Interoperability Testing

- GSMA is currently focussing on ensuring Operator Profiles for eSIM are interoperable with one another @ upcoming Interoperability Test Events



eSIM Remote SIM Profile Verification Tool

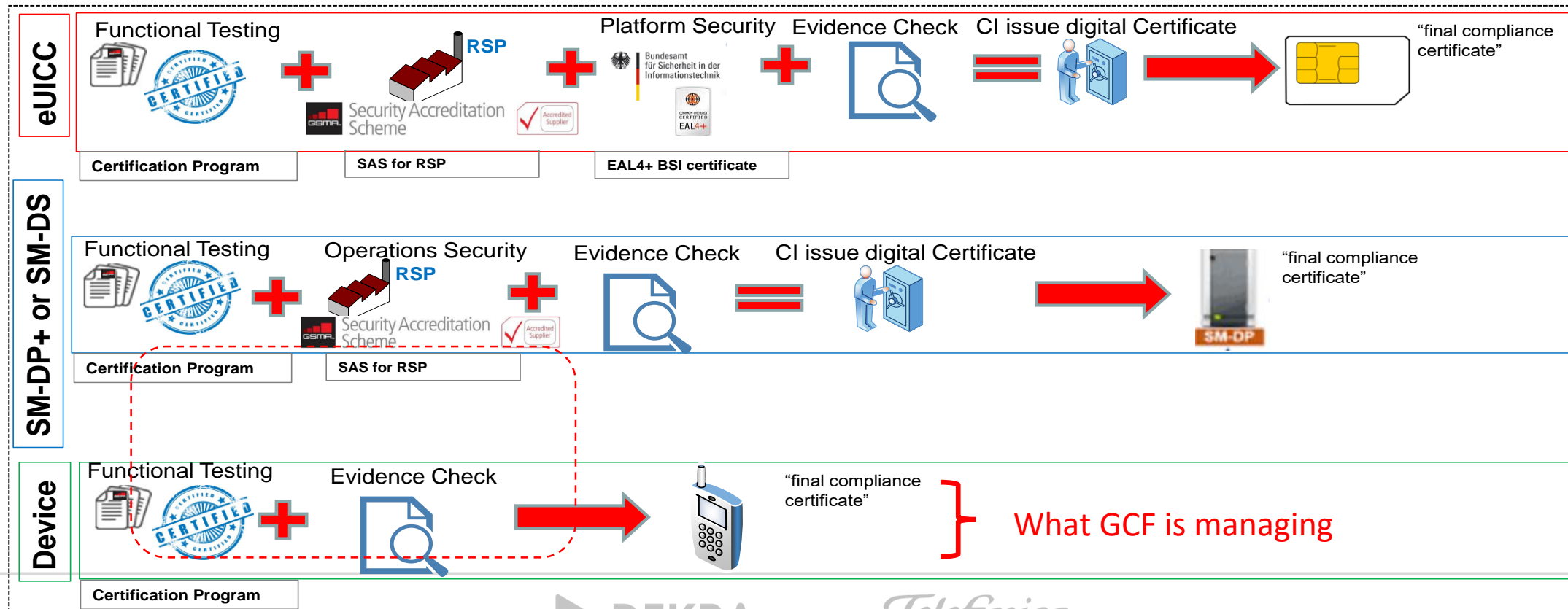
The Profile Verification Tool is a new entity in the architecture that the SM-DP+ can call on demand, via an API to determine if the Profile in question conforms to the SIMalliance Interoperable Profile Specification, has any content in it that could cause installation failures on known deployed eUICCs, or has any other type of issues worth highlighting.



The tool would be a living entity, constantly updated with new versions of the Interoperability specification, new errors coming to light, and eUICCs in the market known to have particular problems.

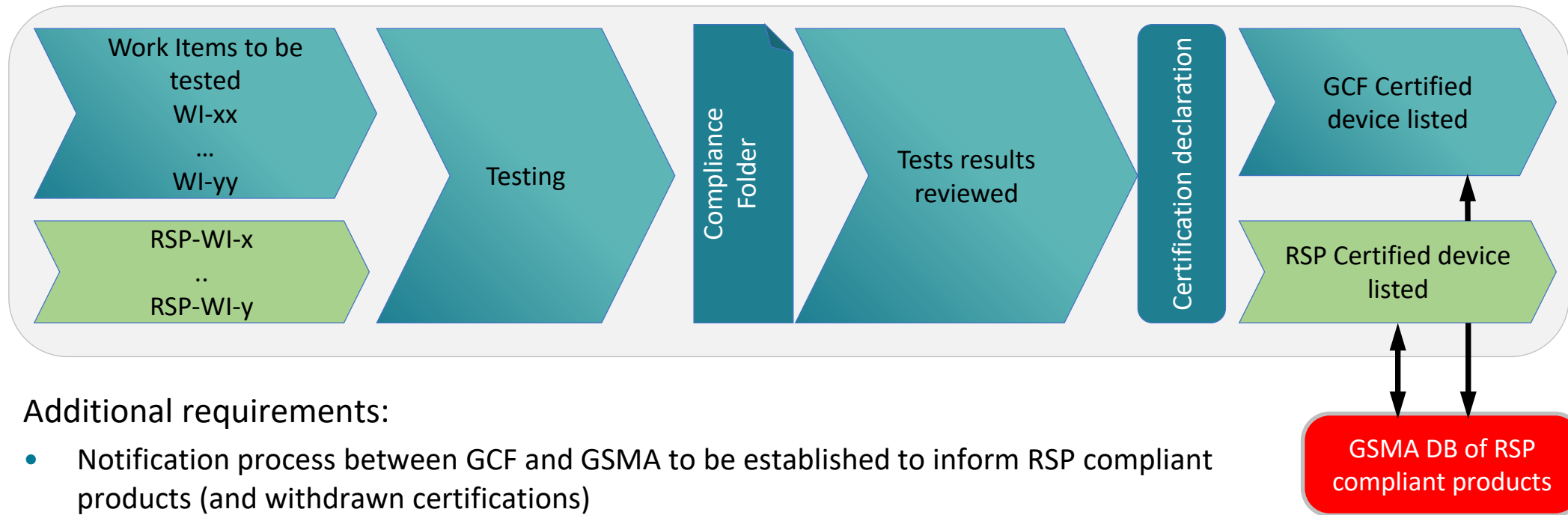
Principle of GSMA RSP compliance

Demonstration of compliance for each RSP product is focussed on consumer devices supporting the LPA (Local Profile Assistant) for remote provisioning



Integration of RSP in GCF Certification Processes

- Requirement for extension of GCF with RSP technology
 - RSP Work Item(s) added based on SGP.23 test specification
 - RSP Work Item(s) provides an **RSP-only certification** of devices
 - RSP Work Items(s) will be required as part of a full GCF certification if applicable



Additional requirements:

- Notification process between GCF and GSMA to be established to inform RSP compliant products (and withdrawn certifications)
- Device identification should cover relevant device details
- Fair and non-discriminatory certification policies for all RSP device vendors (today's GCF and Non-GCF members)

eSIM Remote SIM Provisioning Work Items

- Two eSIM RSP Work Items have been completed in GCF:

WI Number	WI-Name	Status
WI-274	RSP Device (LPA) Conformance Testing	Active in Certification as of Q1/18
WI-276	RSP Device (LPA) Conformance Testing – Non-Critical and Enhanced Features	Active in Certification as of Q1/18

- **WI-274 covers:**
 - Core testing of the Local Profile Assistant (LPA) on the device
- **WI-276 covers:**
 - non-critical and enhanced features (i.e. SM-DS) testing on the LPA

eSIM Remote SIM Provisioning Certification Portal

- GCF offers certification to show compliance with the GSMA's requirements for eSIM support
- The RSP certification can be done as a standalone certification and is offered without requiring GCF membership.
- For more information check out rsp.globalcertificationforum.org to request access.



www.globalcertificationforum.org

[Certification News](#)

 @GCF_Certified

 [Global Certification Forum](#)

<https://www.globalcertificationforum.org/news/events.html>

gcf@globalcertificationforum.org